

True-Count™ User's Manual



Jamex, Inc.
2415 N Triphammer Road
Ithaca NY 14850
800 289 6550|607 257 6550 **Tel**
607 257 1139 **Fax**

©2015 by Jamex, Inc.

All rights reserved worldwide.

All of the information contained in this manual is the property of Jamex, Inc. This manual is provided to purchasers and users of equipment sold by Jamex, Inc. in order to supply the technical information necessary to install, operate, and maintain that equipment. Permission is hereby granted to photocopy this manual if (a) both the original and the copies are used only in support of equipment sold by Jamex, Inc., and (b) if this notice is attached to each copy. No part of this document may be reproduced by any means, other than as stated above, without the written permission of Jamex, Inc., 2415 N. Triphammer Rd., Ithaca, NY 14850.

Rev. June, 2015

Jamex, Inc. - 2415 N. Triphammer Rd., Ithaca, NY 14850 - 800-289-6550

www.jamexvending.com

Table of Contents

Welcome	2
What's in the Box	2
Device Overview	3
Equipment Features	3
Operation of the System	4
Power Up	4
Making Copies	4
Programming the System	5
Selecting a Label Set	5
Programming the Label Set	5
Tables, Figures, and Appendices	6
Appendix A: Label Sets	6-9

Welcome

Thank you for your purchase of a Jamex product. Since 1981, Jamex has developed vending and control technology for a variety of applications. We look forward to assisting you, our customer, with ongoing innovations to support revenue generation and cost control. Should you have any comments, questions, or concerns about Jamex products please call us or your local Jamex dealer.

This manual provides instructions for operating and configuring your Jamex True-Count™. Please keep this manual available for your reference.

In addition to the True-Count™ you have purchased, Jamex also offers the following products:

- Single-copy coin-only vending systems
- Multi-copy vending systems that incorporate all of the following payment methods: coins, bills, prepaid stored-value cards, and credit cards
- Self-service stored-value card stations for purchase and revalue of stored-value cards
- Stored-value card management software
- Compatible mounting systems and stands for all of our products

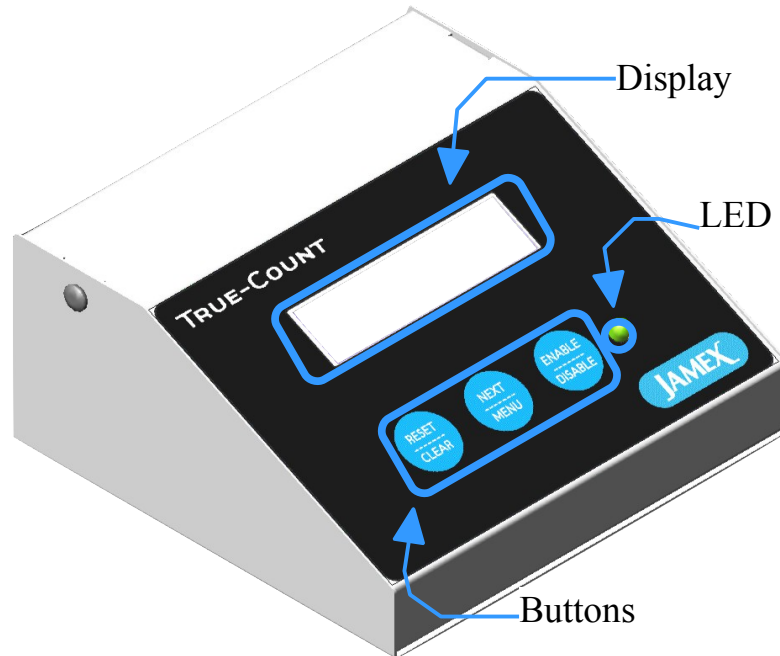
What's in the Box?

The following items are included in the carton:

- True-Count™
- USB cable
- Copier specific interface solution, including installation instructions
- Interface solution extension
- USB power adapter
- This manual

Device Overview

The True-Count™ features a very simple design. The front of the device is comprised of three primary items: the display, control buttons and a status LED.



The display has two rows of sixteen characters and shows the user system configuration and copy totals. The three control buttons are labeled “Reset/Clear”, “Next/Menu”, and “Enable/Disable”. The LED indicates whether or not the copier is enabled and ready for use.

The rear panel of the True-Count™ has two connectors: a USB connector for power, and a 15-pin copier control connector for use with the included interface solution.

Equipment Features

The True-Count™ is a sturdy, compact unit designed to allow you to create and monitor a revenue stream using your existing office equipment. Your Jamex True-Count™ incorporates the following features:

- Remote access control to your photocopier
- Separate counts for up to four distinct copy types
- Selectable displayed label sets to represent each copy type
- Power input from either an outlet or a PC
- Field-upgradable firmware for addition of new features

Operation of the System

Power Up

The True-Count™ can be powered in one of two fashions: via a standard 110V outlet or via a powered USB hub. Included in the box with your True-Count™ is a USB power adapter that can be plugged into a standard 110V outlet. A USB cable is then connected from the adapter to the True-Count™.

If you would prefer, the True-Count™ can be powered by connecting a USB cable from the True-Count™ into a powered USB hub, including USB ports found on the front or rear panels of a PC.

Upon power up the True-Count™ will display copyright and firmware version information.

Making Copies

After powering up the True-Count™ the LED on the front panel will glow red, indicating that the copier is disabled. To enable the copier, press the “Enable/Disable” button on the front panel. The enabled LED will change from red to green and the copier will be ready to use. The display of the True-Count™ will show the first set of meters for the selected label set.

The display of the True-Count™ will display up to two copy counts at one time. To switch between two sets of copy counts (e.g. from displaying small and large black and white copies, to displaying small and large color copies) press the “Next/Menu” button.

When the user is finished making copies press the “Enable/Disable” button again. This will change the enabled LED back to red and disable the copier. The copy counts will remain on the screen and can be viewed using the “Next/Menu” button. If necessary, the copier can be enabled again by pressing the “Enable/Disable” button. Additional copies will be added to the current totals.

To reset the copy counts the copier must be disabled. Press and hold the “Reset/Clear” button for three seconds to clear the copy counts.

Programming the System

Selecting a Label Set

The True-Count™ allows the user to select from a list of predefined label sets to identify the different copy types supported by the True-Count™. While viewing this option the display will alternate between a description of the label set and the text which will be displayed to identify the copy types. The default label set will be shown when the True-Count™ is first unpacked.

Programming the Label Set

The True-Count™ supports the following programmable features.

1. While the Enable/Disable LED on the True-Count™ is red, press and hold the “Next/Menu” button for three seconds.
2. When the display reads “Programming Mode” release the “Next/Menu” button.
3. The display will alternate with the label set description and the labels that will be shown.
4. Each time you press the “Enable/Disable button you will advance through the label sets.
5. When the last label set is reached, pressing the “Enable/Disable” button will return to the first label set.
6. Once the desired label set is on the screen, return to the standard operating mode by pressing the “Reset/Clear” button to exit program mode.

For a complete list of label sets and their associated display text see”Appendix A: Label Sets” in this document.

Tables, Figures, and Appendices

Appendix A: Label Sets

The selectable label sets for the True-Count™ are listed below.

Label Set 1 is the default label set and registers four copy types under the generic identifiers: Copy A, Copy B, Copy C, and Copy D.

Set#: 1 4 Price
Desc: Generic
Copy A Copy B
Copy C Copy D

Label Set 2 is designed for single copy type operation. This applies where the copier supplies information about only one copy type to an external controller, or if you only care to know about the total number of copies made and are not using the individual price points.

Set#: 2 1 Price
Desc: Generic
Copies

Label Set 3 is for use in color photocopiers where information is available about color selection. Two copy types are shown: black & white copies and color copies. This set can be used for copiers that do not also provide information about paper size selection, or for when paper size selection is not relevant.

Set# : 3 2 Price
Desc : BW & Color
B&W Color

Label Set 4 is for use in photocopiers where information is available about paper size selection. Two copy types are shown: small and large.

Set# : 4 2 Price
Desc : Paper Size
Small Large

Label Set 5 is most commonly used with color copiers. This label set will display both large and small color and black & white copies. You can also try label set 6 or consult with Jamex technical support to determine the label set you should use with your copier.

Set# : 5 4 Price
Desc : Color&Size
Sml B&W Lrg
Sml Color Lrg

Label Set 6 is commonly used with color copiers. This label set will display both large and small color and black & white copies. You can also try label set 5 or consult with Jamex technical support to determine the label set you should use with your copier.

Set#: 6 4 Price		
Desc: Color&Size		
Sml	Color	Lrg
Sml	B&W	Lrg

Label Set 7 is for use with black & white photocopiers that support signals about duplex selection.

Set#: 7 4 Price		
Desc:Size&Duplex		
Sml	1-Sided	Lrg
Sml	Duplex	Lrg

Label Set 8 is for use with black & white photocopiers that support signals about paper size selection and the state of selection for reduction or enlargement.

Set#: 8 4 Price		
Desc:Size&Duplex		
Sml	100%	Lrg
Sml	Zoom	Lrg

Label Set 9 is for use with black & white photocopiers that support signals about the state of selection for reduction or enlargement.

Set#: 9 2 Price
Desc: Zoom

100%	Zoom
------	------

Label Set 10 is for use with black & white photocopiers that support signals about the state of selection for duplex copying.

Set#: 10 2 Price
Desc: Duplex

1-Sided	Duplex
---------	--------



Jamex, Inc.

2415 N Triphammer Road

Ithaca NY 14850

800 289 6550|607 257 6550 **Tel**

607 257 1139 **Fax**